

# Clicky Gone

---

Clicky Gone 1.4.4.0  
*User Manual*

<http://www.clickygone.sourceforge.net>

Last modified: March 13, 2010

# Contents

- 1 User License** **2**
  
- 2 Introduction** **3**
  - 2.1 About . . . . . 3
  - 2.2 Features . . . . . 4
  
- 3 Manual** **4**
  - 3.1 How Does It Work? . . . . . 4
  - 3.2 The User Interface . . . . . 5
  - 3.3 Clicky Gone . . . . . 6
    - 3.3.1 Menu . . . . . 6
    - 3.3.2 System Menu . . . . . 6
    - 3.3.3 System Tray . . . . . 7
    - 3.3.4 About Box . . . . . 7
  - 3.4 Clicky Gone Config . . . . . 8
    - 3.4.1 Start Page . . . . . 8
    - 3.4.2 General . . . . . 9
    - 3.4.3 Advanced . . . . . 10
    - 3.4.4 Show Menu . . . . . 11
    - 3.4.5 Click And Hide . . . . . 12
    - 3.4.6 Hide Active . . . . . 13
    - 3.4.7 Boss Mode . . . . . 14
    - 3.4.8 Hide And Show . . . . . 15
    - 3.4.9 Effects . . . . . 16

## 1 User License

Clicky Gone User Manual, © 2009 - 2010 Alan Howie

This document is distributed under the terms of the GNU General Public License v3.

Clicky Gone is free software; you can redistribute it and/or modify it under the terms of the GNU General Public License as published by the Free Software Foundation; either version 3 of the License, or (at your option) any later version.

This program is distributed in the hope that it will be useful, but **WITHOUT ANY WARRANTY**; without even the implied warranty of **MERCHANTABILITY** or **FITNESS FOR A PARTICULAR PURPOSE**. See the GNU General Public License for more details.

You should have received a copy of the GNU General Public License along with this program; if not, write to the Free Software Foundation, Inc., 59 Temple Place - Suite 330, Boston, MA 02111-1307, USA.

## 2 Introduction



Figure 1: User Interface

### 2.1 About

Clicky Gone is a windows hider application used to hide windows on the desktop and the tabs on the task bar, also comes with the addition of the advanced features for the power user.

If you are running lengthy tasks that's taking up space on the desktop or the task bar, then you could hide it and then come back to it later. If you are in the office and supposed to be doing work but instead are browsing the net and your boss walks in, just hit the Boss Keys to hide the active window and optionally mute the sound. You can also optionally hide the window in the system tray and then click the hidden window icon to unhide that window. There is also the option to right click the windows caption or task bar button and select the "Hide" menu item to hide the window without a single key press...

## 2.2 Features

- Licensed under the GNU General Public License, Version 3
- Makes windows disappear without closing them
- Can hide windows in the system tray
- Can hide the active window
- Can hide the active window and disable the system sound (Boss Mode)
- Can run hidden windows in the background
- Can change the priority of applications
- Can make windows stay on top
- Can make inactive windows faded
- Its 100% Free

## 3 Manual

### 3.1 How Does It Work?

Clicky Gone has almost no user interface; it's basically keyboard and mouse driven. The main access to its features is through *Clicky Gone Config* and the *Clicky Gone Menu*. *Clicky Gone Config* is an external application used to communicate with Clicky Gone. This application is used to set all options of Clicky Gone. And the *Clicky Gone Menu* is used to view hidden windows and can be accessed through the keyboard or the Clicky Gone icon in the system tray (visible if enabled through *Clicky Gone Config*)

## 3.2 The User Interface



Figure 2: User Interface

The user interface is pretty much self explanatory, you can access individual features through the menu items on the left and find out about version information and updates by accessing the *About* item.

When you have made changes just hit *Apply*;

The *Revert* works by restoring settings from the last apply, in case you make a mistake.

Click *Defaults* to restore all settings as if the application was just installed.

Click *Exit* to close the configuration application.

### 3.3 Clicky Gone

This section will cover Click Gones common interface features.

#### 3.3.1 Menu

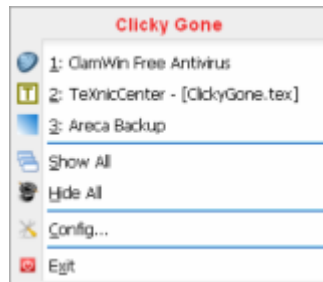


Figure 3: Clicky Gone Menu

The Clicky Gone menu will give you access to your hidden windows, configuration, hide/show all windows and the option to exit the application.

#### 3.3.2 System Menu

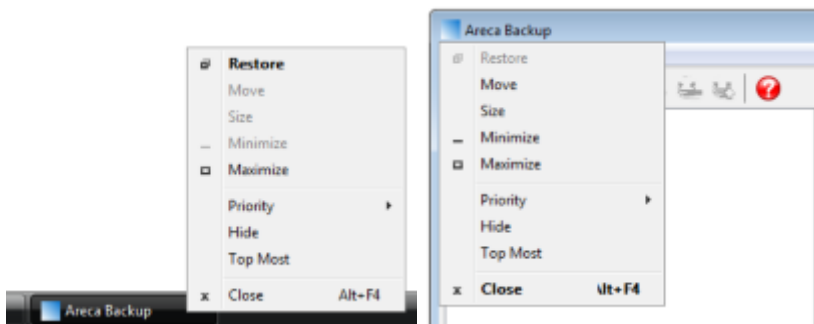


Figure 4: Clicky Gone System Menu

Gives you access to a simple hide option and some advanced features. You can change the priority of the windows process and stick the window on top of others so that it stays in view.

### 3.3.3 System Tray



Figure 5: Clicky Gone Tray

Gives you access to the Clicky Gone menu (If Show in system tray is enabled in the Configuration).

Allows you to hide windows in the system tray (If Hide windows in system tray is enabled in Configuration). The hidden windows appear darkened and when hovered over will display a 'Hidden: Window Title' tooltip. Clicking the icon will show the hidden window.

### 3.3.4 About Box



Figure 6: About Clicky Gone

Displays the current version, license info and the option to check for updates or show your support through a donation to the project.



### 3.4 Clicky Gone Config

This section will cover Click Gones Configuration options.

#### 3.4.1 Start Page



Figure 7: Start Page

Gives a quick overview of all assigned hotkeys.

### 3.4.2 General

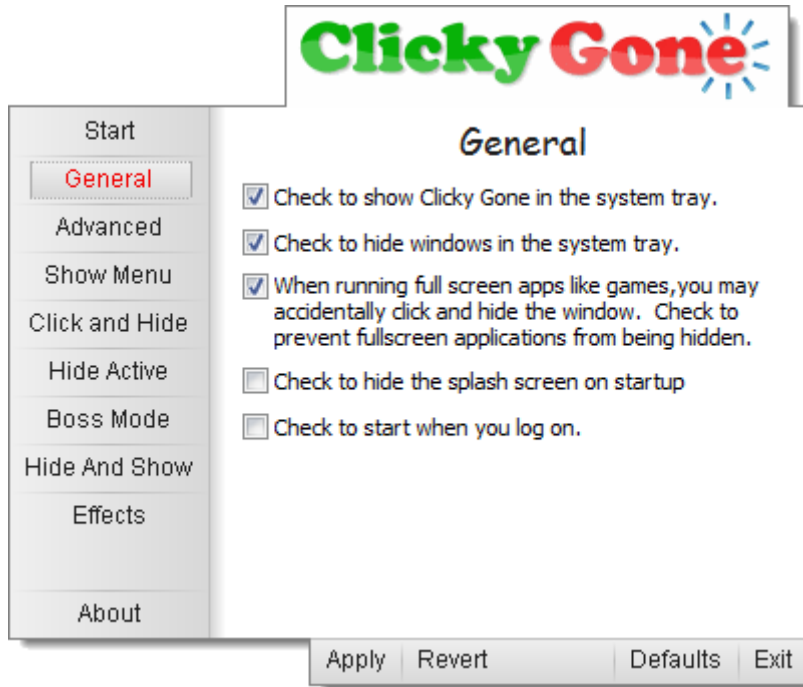


Figure 8: General Setup

The General page is your most basic and most used options.

### 3.4.3 Advanced

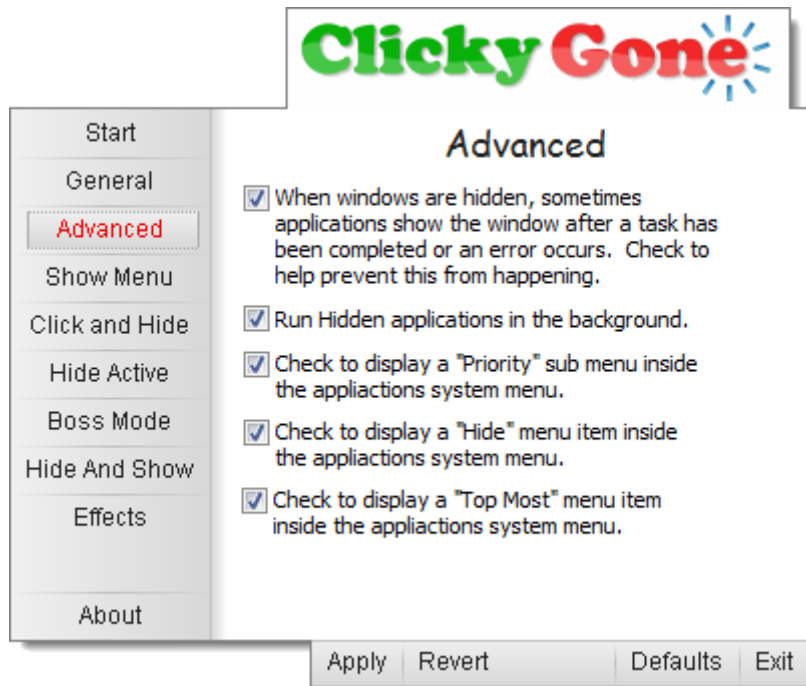


Figure 9: Advanced Features

The Advanced page is for the advanced user who wants more control over applications and the speed at which they can run.

### 3.4.4 Show Menu

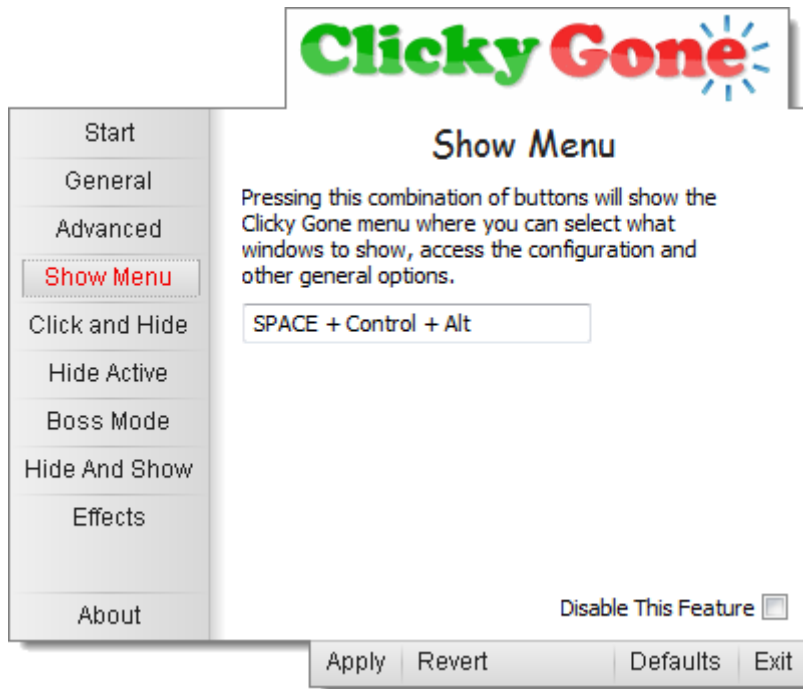


Figure 10: Show Menu

A place where your windows are hidden.

This menu will give you access to the hidden windows and also the configuration program.

### 3.4.5 Click And Hide

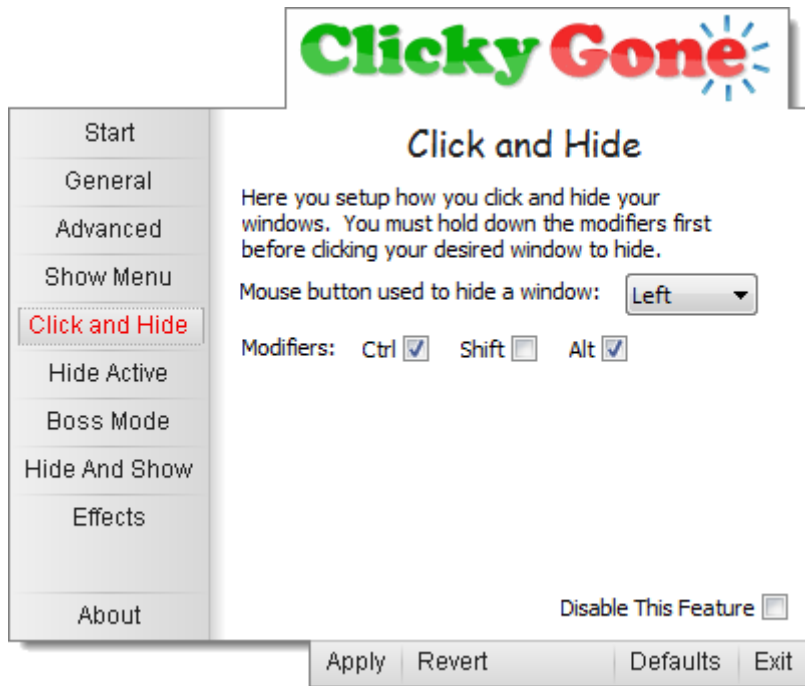


Figure 11: Click And Hide

Hide windows by selectively clicking on them.

Hold down the key combination and click the window you wish to hide with your selected mouse button.

### 3.4.6 Hide Active



Figure 12: Hide Active

Quickly hide the active foreground window.

Sometimes hiding windows can be problematic, Enabling the 'Hide all windows belonging to that process' can help solve these problems.

### 3.4.7 Boss Mode

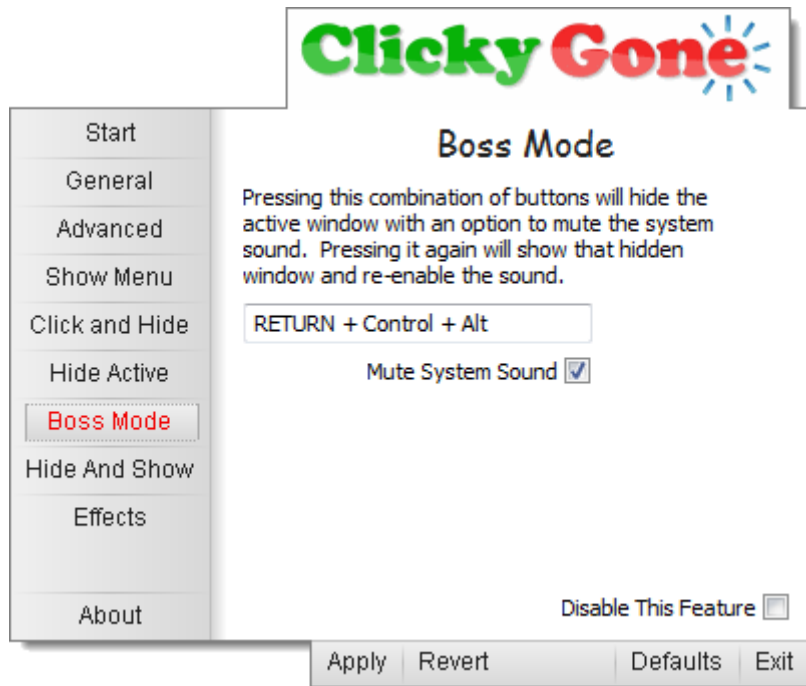


Figure 13: Boss Mode

Boss Mode is used for awkward moments.

Its purpose is to hide the active window and mute the system sound (If your a vista or higher user then only the sound for the application window will be muted). Pressing the same combination of keys will show the hidden window and re-enable the sound.

### 3.4.8 Hide And Show

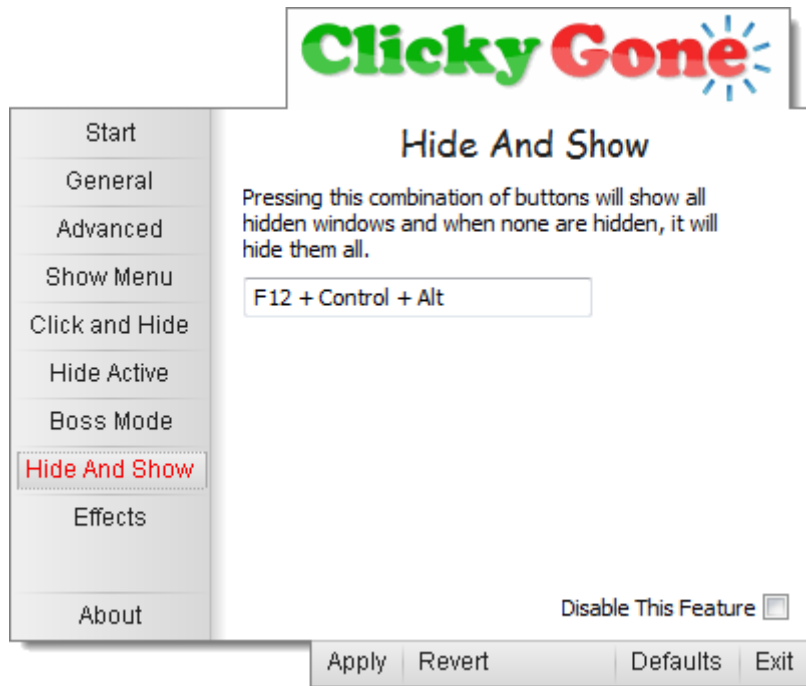


Figure 14: Hide And Show

To Quickly hide all windows or re-show them.

This option is usefull if you quickly want to clear your desktop of windows.

On activation; if there are already any hidden windows then they are shown, if no windows have been hidden then all windows will be hidden.



### 3.4.9 Effects

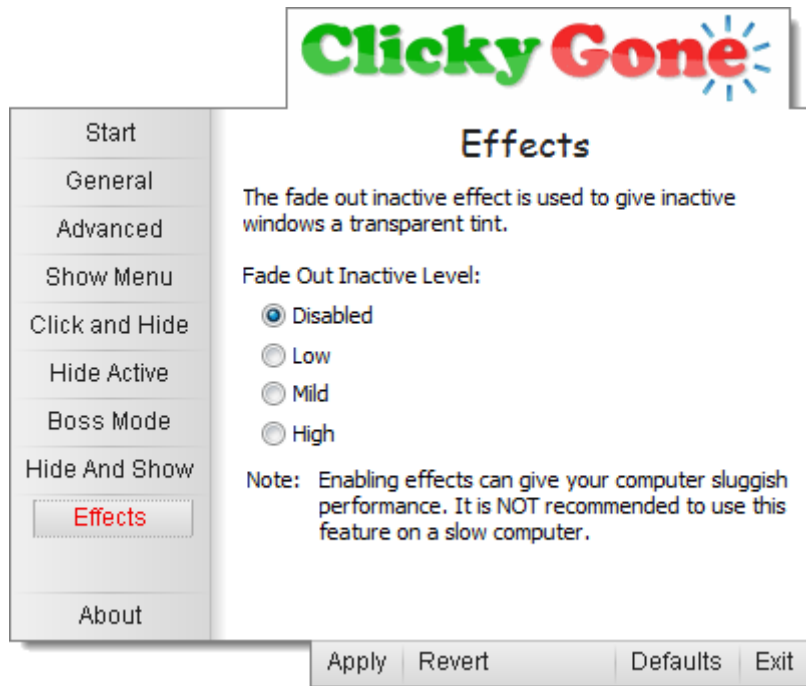


Figure 15: Effects

#### Special Effects:

The only current effect is the inactive window fade out. This feature applies a transparency to only in-active windows.